

Trade Extract Utility for Moxy®

Trade Extract Utility (TEU) establishes a connection with an existing Moxy® database in order to retrieve trade related data. The Utility is capable of writing the data to a variety of file formats. Formats specific to various custodians are available. Additional formats can also be customized if needed. The TEU can be used to upload trade and order information.

Each interface is designed to work with the existing fields available when running the standard Moxy® Reports. This should allow the typical Moxy® user to easily adapt to the process of running the utility. Check the list of existing interfaces to see if yours is available. If its not on the list contact mherrera@cssi.org to see about having one created.

In some cases, custom configuration may be required based on the custodian or Moxy® system settings. In all cases there is a validation process that ensures the quality of data the custodian receives.

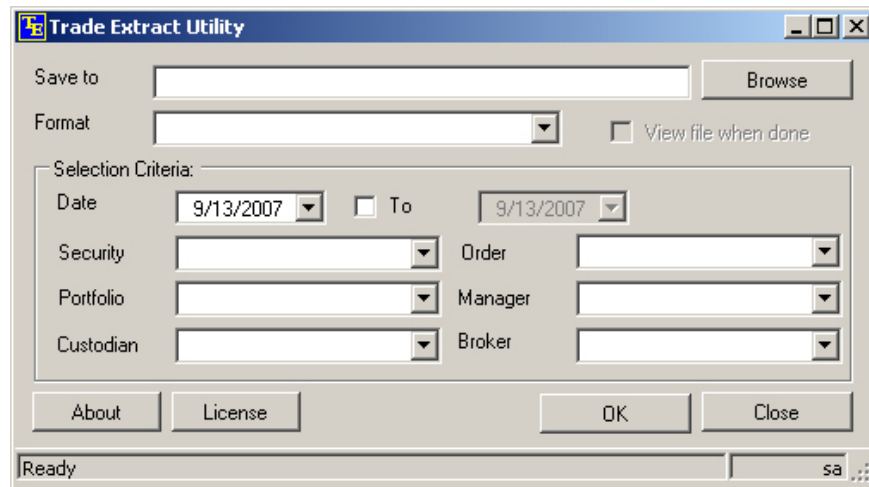


The screenshot shows a dialog box titled "Trade Extract Utility Login". It contains four input fields: "Server Name" with the value "cssi-sql", "Database" with the value "Moxy52", "User name", and "Password". At the bottom, there are "Cancel" and "OK" buttons.

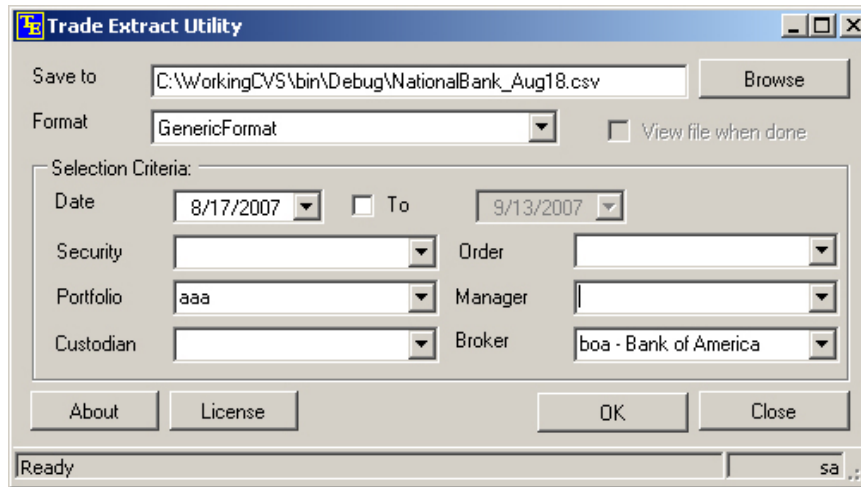
◀ **TEU Logon:** Upon logon the user enters which server and database to use. If a company has multiple Moxy® installs or databases, the utility has the flexibility to work with them.

Main TEU Screen: Runtime settings screen that defines the custodian extract to be created.

▶ The Selection criteria allows the user to tightly or widely define which trade confirmations to extract.



The screenshot shows the main window of the "Trade Extract Utility". It features a "Save to" field with a "Browse" button, a "Format" dropdown menu, and a checkbox for "View file when done". The "Selection Criteria" section includes "Date" (9/13/2007) and "To" (9/13/2007) dropdowns, and a grid of dropdowns for "Security", "Portfolio", "Custodian", "Order", "Manager", and "Broker". At the bottom, there are "About", "License", "OK", and "Close" buttons. The status bar at the bottom left shows "Ready" and the bottom right shows "sa".



TEU Example:

This is an example of the settings defined for getting all transactions in portfolio AAA for a specific broker for a specific date range. It then stores the extract in the specified location.

Licensing:

Each interface is licensed for a year. At the end of each year, a 20% maintenance fee renews the license for another year. The license allows the user to install the utility on any number of computers. The license requires that the interface is used on a version of Moxy® that has the appropriate Advent Copy Number.

Existing Output Formats:

- CIBC Mellon
- Merrill Lynch MMS
- Morgan Stanley
- National Penn
- Northern Trust
- Smith Barney
- Wachovia
- More Coming!!

System requirements

Moxy® 4.0 or higher
.NET Framework 2.0

CSSI

901 East 8th Avenue, Suite T001
King of Prussia, PA 19406

Phone: 610-992-9287

Fax: 610-992-9289

www.cssi.org

Contact: Michael Herrera

General Manager

mherrera@cssi.org